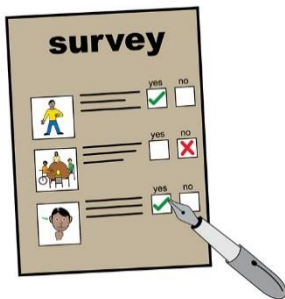
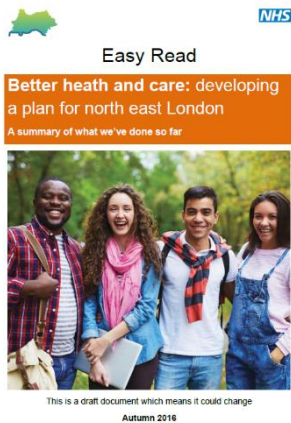


# Better Health and Care Plan: Community Views Survey



## What is the survey about?

To find out what local people think about the north east London **Better Health and Care Plan**.



**Better Health and Care Plan:** A plan that looks at how services can improve and how they can carry on in the future.



This survey will gather comments from local people about how to improve health and care in their area.



We want to hear from everyone who lives in the north east London area (Barking & Dagenham, City, Hackney, Havering, Newham, Redbridge, Tower Hamlets and Waltham Forest).








In this easy read survey, when a tricky word is used, it will be in **bold blue text**. It will be explained in a blue box.

**Question 1:**

The Better Health and Care Plan wants to reduce the strain on health services by encouraging more people to look after themselves and their health so that they stay well.

**Please number the options below from 1 to 5 in the order that you feel is most important to you. (1 = most important, 5= least important)**

	Improve patient education to enable people to look after themselves better	
	Provide <b>peer support</b> on a one-to-one or group basis <b>Peer support:</b> When people who are the same as you support you.	
 <p>Pharmacy</p>	Provide other care services (such as pharmacies) that support people to look after themselves better	
	Actively support people with <b>complex needs</b> <b>Complex needs:</b> People who have a range of support requirements such as learning difficulties and physical disabilities so may need more help.	
	Social change to promote healthy <b>communities</b> <b>Communities:</b> A group of people living in the same place.	

What do you think of these ideas? Can you think of any other ways of encouraging people to look after themselves?

---

---

---

---

---

---

## Question 2:



The Better Health and Care Plan proposes to change the way care is provided by making sure that everyone always receives high quality **primary care** services. Care will be available from 8am to 8pm, seven days a week. What do you think about this?

**Primary care:** Health care such as GP's and other community health services.

---

---

---

---

---

---

---

---

## Question 3:



The Better Health and Care Plan proposes to make sure we have the right services in the right place by reducing the number of people coming to hospitals. This would be achieved by providing good outpatient care and other services in the hospital such as **ambulatory care hubs**. What do you think about this?

**Ambulatory care hubs:** Places in the hospital where clinicians check to find out what health needs a patient has then helps them manage their conditions.

---

---

---

---

---

---

---

---

### Question 4:



The Better Health and Care Plan proposes to improve **specialised care** by working with local authorities. This would help address some current issues such as long waiting times. An outcome of this could mean travelling across London or other parts of the country to receive services. What do you think about this?

**Specialised care:** Services that are available in a few hospitals and have a smaller number of patients using the services. There are usually less than one million people using these services. Services include in-patient mental health services and treatments for rare cancers.

---

---

---

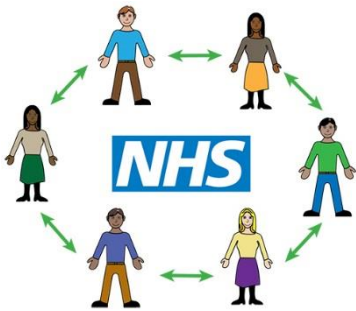
---

---

---

---

### Question 5:



The Better Health and Care Plan proposes to provide **'place based care'** in response to our population's health and wellbeing needs. What do you think about this?

**Place based care:** This involves health and social care providers working together to help people stay well and independent. This means that they would have to manage the resources that are available.

---

---

---

---

---

---

---



## Equality Monitoring Form

***All information is completely confidential and information will only be used to ensure we are reaching the whole community.***

Gender:	Male <input type="checkbox"/> Female <input type="checkbox"/> Transgender <input type="checkbox"/> Prefer not to say <input type="checkbox"/>
Age:	18 – 24 <input type="checkbox"/> 25 – 34 <input type="checkbox"/> 35 – 44 <input type="checkbox"/> 45 – 54 <input type="checkbox"/> 55 – 59 <input type="checkbox"/> 60 – 64 <input type="checkbox"/> 65 – 74 <input type="checkbox"/> 75 + <input type="checkbox"/> Prefer not to say <input type="checkbox"/>
Ethnicity:	
Do you consider yourself to be disabled?	Yes <input type="checkbox"/> No <input type="checkbox"/>
If yes, please specify your disability	
What Borough do you live in?	
What is your religion, faith or belief?	Christian <input type="checkbox"/> Buddhist <input type="checkbox"/> Muslim <input type="checkbox"/>  Hindu <input type="checkbox"/> Sikh <input type="checkbox"/> Jewish <input type="checkbox"/>  No religion <input type="checkbox"/> Prefer not to say <input type="checkbox"/>  Other <input type="checkbox"/> Please Specify _____

